

Gateway Qualifications and University of East London

Progression agreement



**University of
East London**

 01206 911 211

 @GatewayQuals

 www.gatewayqualifications.org.uk

 enquiries@gatewayqualifications.org.uk



About Gateway Qualifications

Our values:

- A belief in the entitlement of people to gain recognition for their achievements in learning and to fulfil their potential.
- Respect for and encouragement of diversity in learners and learning approaches, partners and settings.
- A passion to make a difference to disadvantaged individuals, groups and communities.
- An ambition to open up opportunities for vocational progression and personal and social development.
- A commitment to integrity and ethical business practices.

New Access to HE Diplomas for Sept 2021

Access to HE Diploma (Creative Digital Media)

Access to HE Diploma (Creative Industries)

Access to HE Diploma (Medicine)

Access to HE Diploma (Social Work)

Access to HE Diploma (Logistics and Business Management)

Access to HE Diploma (Health and Human Sciences)



Other diplomas that are available



Access to HE Diploma (Art and Design)



Access to HE Diploma (Humanities and Social Sciences)



Access to HE Diploma (Business Management)



Access to HE Diploma (Nursing and Midwifery)



Access to HE Diploma (Computer Game Design and Development)



Access to HE Diploma (Policing and Criminology)



Access to HE Diploma (Engineering Science and Mathematics)



Access to HE Diploma (Science)



Access to HE Diploma (Health and Social Care)



Access to HE Diploma (Travel and Tourism)



Access to HE Diploma (Health Professions)



and over 30 others to choose from!

Why partner with the University of East London?

- Widening participation
- Supporting students to realise their potential and aspirations
- Continue to raise awareness of Access to HE and its impact on students



Benefits for centres

- Recruitment of students
- Increased awareness and marketing
- Direct and planned progression routes for students
- IAG, outreach and curriculum enrichment service
- Professional development support for staff
- Collaboration with the university

Benefits for students

- Guaranteed offer/interview
- IAG, outreach and curriculum enrichment service
- Curriculum enrichment opportunities
- Transition support

Admission and Progression

- A range of benefits for students applying from our Access to HE Diplomas
 - guaranteed interview/offer arrangements
 - preferential entry tariffs



Lower entry requirements

University of East London - schools

School of Architecture, Computing and Engineering (ACE)

School of Arts and Digital Industries (ACI)

School of Business and Law (BL)

School of Education and Communities (EDUCOM)

School of Health, Sports and Biosciences (HSB)

School of Psychology (PSY)

Outreach Programme

- An insight into what it is like to study at university
- Developed and designed to meet specific needs for our centres



Information, Advice & Guidance (IAG) Sessions

- Free, impartial advice and guidance
 - Student finance and budgeting
 - Higher education options
 - Progression routes, including career options and pathways
 - Completion of UCAS application form
 - Personal statement writing

Subject Specific Master Classes

- Opportunity for students to learn more about the subject of their choice
- An insight into entry requirements of the subject area
- Meet and question student ambassadors



Transitional Support

- Bespoke to Access to HE students
- Next steps information
- Gaining transferrable skills required for life at university and by employers



Professional Development Support for Practitioners

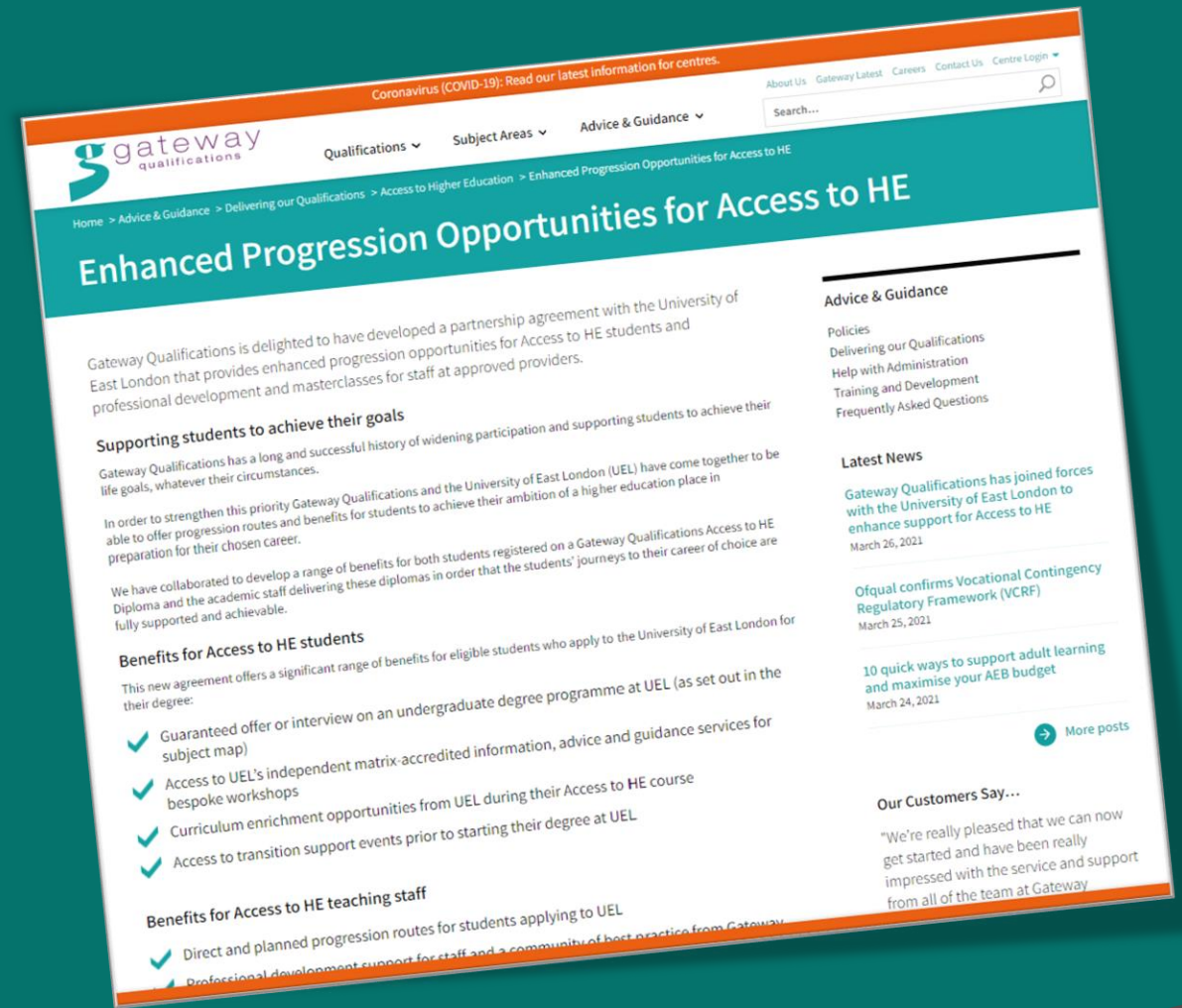
Seminars and Masterclasses for Access to HE tutors

- Subject specific
- Topics to support students



Joint Promotional Activities

- Website presence
- Participation at UEL open events



Recognised centres flyer



University of
East London



ENHANCED PROGRESSION OPPORTUNITIES FOR ACCESS TO HE STUDENTS

A partnership agreement with the University of East London that provides enhanced progression opportunities for students and, professional development and masterclasses for Gateway Qualifications approved providers.

Supporting students to achieve their goals

Gateway Qualifications has a long and successful history of widening participation and supporting students to achieve their life goals, whatever their circumstances.

In order to strengthen this priority Gateway Qualifications and the University of East London (UEL) have come together to be able to offer progression routes and benefits for students to achieve their ambition of a higher education place in preparation for their chosen career.

We have collaborated to develop a range of benefits for both students registered on a Gateway Qualifications Access to HE Diploma and the academic staff delivering these diplomas in order that students' journeys to their careers of choice are fully supported and achievable.

Benefits for your students

This new agreement offers a significant range of benefits for your students who apply to the University of East London for their degree:

- Guaranteed offer/interview on an undergraduate degree programme at UEL (as set out in the subject map)
- Access to UEL's independent matrix-accredited information, advice and guidance services for bespoke workshops
- Curriculum enrichment opportunities from UEL during their Access to HE course
- Access to transition support events prior to starting their degree at UEL

Benefits for you

- Direct and planned progression routes for students applying to UEL
- Professional development support for staff and a community of best practice from Gateway Qualifications and the University of East London
- Long term collaborative opportunities with UEL, Gateway Qualifications and employers to create, design and develop Access to HE Diplomas with identified progression routes to employment

What's available for your Students?

Opportunities available to students from UEL

For all applicants to UEL degrees, using the specific UCAS code UELGATE, the University of East London's Outreach and Access Team will provide:

Information, Advice & Guidance Sessions

- Preferential access to UEL's IAG service, available through sessions or talks and workshops arranged to meet the specific needs of mature students progressing from Gateway Qualifications' Access to HE Diplomas. They will offer:
 - impartial advice and guidance to support students with student finance and budgeting, higher education options and progression routes, including career options and pathways.
 - information on how to complete a UCAS application form, write a personal statement and gain insight into student finance and university student life.

Subject Specific Experiences

- Subject specific master classes and practical workshops, giving them the opportunity to learn more about the subject of their choice.
- The opportunity to meet student ambassadors at the UEL to talk to them about their experiences and address any concerns they might have.

Bespoke Transition Programmes

- Opportunity to participate in a Bespoke Transition Programme which is designed:
 - to meet the specific needs of Access to HE students, to allay fears and offer oversight of all aspects of university life.
 - to offer the benefit of receiving next steps information and gaining transferrable skills required for life at university.

All of these activities will be developed and designed to meet the specific needs of the range of Gateway Qualifications' Recognised Centres and will be accessible face to face or on-line.

What's available for You?

Professional Development Support for Access to HE Practitioners

The University of East London and Gateway Qualifications are developing a programme of CPD activities for you and your colleagues. The purpose of this will be to provide opportunities for you to maintain currency in your subject, network with colleagues to explore and develop your provision and strengthen your relationship with the UEL colleagues. Opportunities will include:

- engagement with UEL's programme of masterclasses, accessible face to face or virtually
- online forums
- virtual teaching and learning training events

Which courses does it apply to?

The agreement covers most Gateway Qualifications Access to HE Diplomas where there is a viable undergraduate programme offered by UEL. Full details of the courses covered by this agreement are set out in the subject map. For the most up to date list of courses, please visit www.gatewayqualifications.org.uk/uel.

What to do next

Good news! If you're already running Gateway Qualifications Access to HE Diplomas these benefits are available to you now – simply contact y.bentley@uel.ac.uk to get started.

If you're not currently running Gateway Qualifications Access to HE Diplomas, don't worry, get in touch with us to discuss how you can start and begin offering these benefits to your staff and students.



Find out how we can help meet your learners' needs – go to www.gatewayqualifications.org.uk/access
Tel: 01206 911 211
enquiries@gatewayqualifications.org.uk

Student flyer



Guaranteed offer or interview from the University of East London for Access to HE Students

Enhanced progression opportunities to University of East London degree programmes are available for students on Gateway Qualifications Access to HE Diplomas.

Supporting students to achieve their goals

Gateway Qualifications has a long and successful history of widening participation and supporting students to achieve their life goals, whatever their circumstances.

In order to strengthen this priority Gateway Qualifications and the University of East London (UEL) have come together to be able to offer progression routes and benefits for you to achieve your ambition of a higher education place in preparation for your chosen career.

We have collaborated to develop a range of benefits for students registered on a Gateway Qualifications Access to HE Diploma in order that your journey to your career of choice is fully supported and achievable.

Benefits for You

This new agreement offers a significant range of benefits for you if you apply to the University of East London for your degree:

- Guaranteed offer or interview on an undergraduate degree programme at UEL for all eligible students.
- Access to UEL's bespoke advice and guidance services.
- Curriculum enrichment opportunities from UEL during your Access to HE course.
- Support in preparing to go to university through activities and events prior to starting your degree at UEL.

Opportunities available from UEL

If you apply to UEL to do a degree, and you use the specific UCAS code UELGATE, the University of East London's Outreach and Access Team will provide:

Information, Advice & Guidance Sessions

- Preferential access to UEL's IAG service, available through sessions or talks and workshops arranged to meet the specific needs of mature students progressing from Gateway Qualifications' Access to HE Diplomas. They will offer:
 - impartial advice and guidance to support you with student finance and budgeting, higher education options and progression routes, including career options and pathways.
 - information on how to complete a UCAS application form, write a personal statement and gain insight into university student life.

Subject Specific Experiences

- Subject specific master classes and practical workshops, giving you the opportunity to learn more about the subject of your choice.
- The opportunity to meet student ambassadors at the UEL to talk to them about their experiences and address any concerns you might have.

Bespoke Transition Programmes

- You can join a Bespoke Transition Programme which is designed to meet your specific needs as an Access to HE student, it will address any fears you might have and give an overview of all aspects of university life and support you in preparing for life at university.



Start your journey to UEL here

For more information contact your local Gateway Qualifications approved Access to HE provider:



What happens next?

UEL agreement:

- IAG and transition programme
- CPD for tutors



What do you need to do next?

Good news!

If you're already running Gateway Qualifications Access to HE Diplomas these benefits are available to you now.

Or contact us to discuss how to start!

Customer Excellence Team: 01206 911 211

BE THE CHANGE



University of
East London

Pioneering Futures Since 1898

Be The Change at the University of East London

Vanessa Varvas, Chief Marketing Officer

Date: Wednesday 21st April 2021


Pioneering Futures Since 1898

Strategic Vision

Our Vision 2028 is an ambitious 10-year strategy to become the UK's leading careers-intensive university and equip the next generation of changemakers with valuable skills to make an impact through their careers.

The University of East London recognises that the world is changing and our strategic vision 2028 is to be pioneers of future careers and sustainable innovation for a changing world.

Our four key strategic priorities are: Equality, Diversity, and Inclusion; Leading Sports University; International collaboration; an Entrepreneurial University in the heart of London.



**TODAY'S WORLD IS RAPIDLY
CHANGING. TOMORROW'S PROBLEMS
ARE UNKNOWN. SOCIETY NEEDS
EXPERTS FOR ANSWERS. AT THE
UNIVERSITY OF EAST LONDON,
WE HELP PREPARE YOU FOR AN
UNPREDICTABLE FUTURE AS A
GRADUATE, YOU'LL LEARN TO
ADAPT, LEAD AND MAKE AN IMPACT.
SO WHOEVER YOU ARE, WHEREVER
YOU'RE FROM, WE'LL MAKE SURE
YOU'RE FIT FOR THE FUTURE TOO.**

Pioneering Futures Since 1898

1898

West Ham Technical Institute opens

Only for a fire to break out a year later and burn down most of the institute.



1939

College at war

The campus is evacuated and is used as a military training base.



1992

Birth of a university

The University of East London is born.



1999

Docklands campus opens.

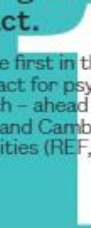
London's first new university campus for over 50 years.



2014

Making an impact.

We were first in the UK for impact for psychology research – ahead of both Oxford and Cambridge Universities (REF, 2014).



2019

Professional Fitness and Mental Wealth introduced.

We built a unique programme into all our courses to help prepare for careers of the future.



1900

Phoenix rises

The phoenix is part of our logo and coat of arms because just like the mythical bird, The University of East London was reborn from the ashes.



1981

Docklands revival begins

The London Docklands Corporation is set up to transform derelict industrial areas.



2012

The London Olympics and Paralympics.

Team USA base themselves at The University of East London's new SportsDock, Michelle Obama visits us and The University of East London student Gemma Gibbons wins Olympic judo silver.



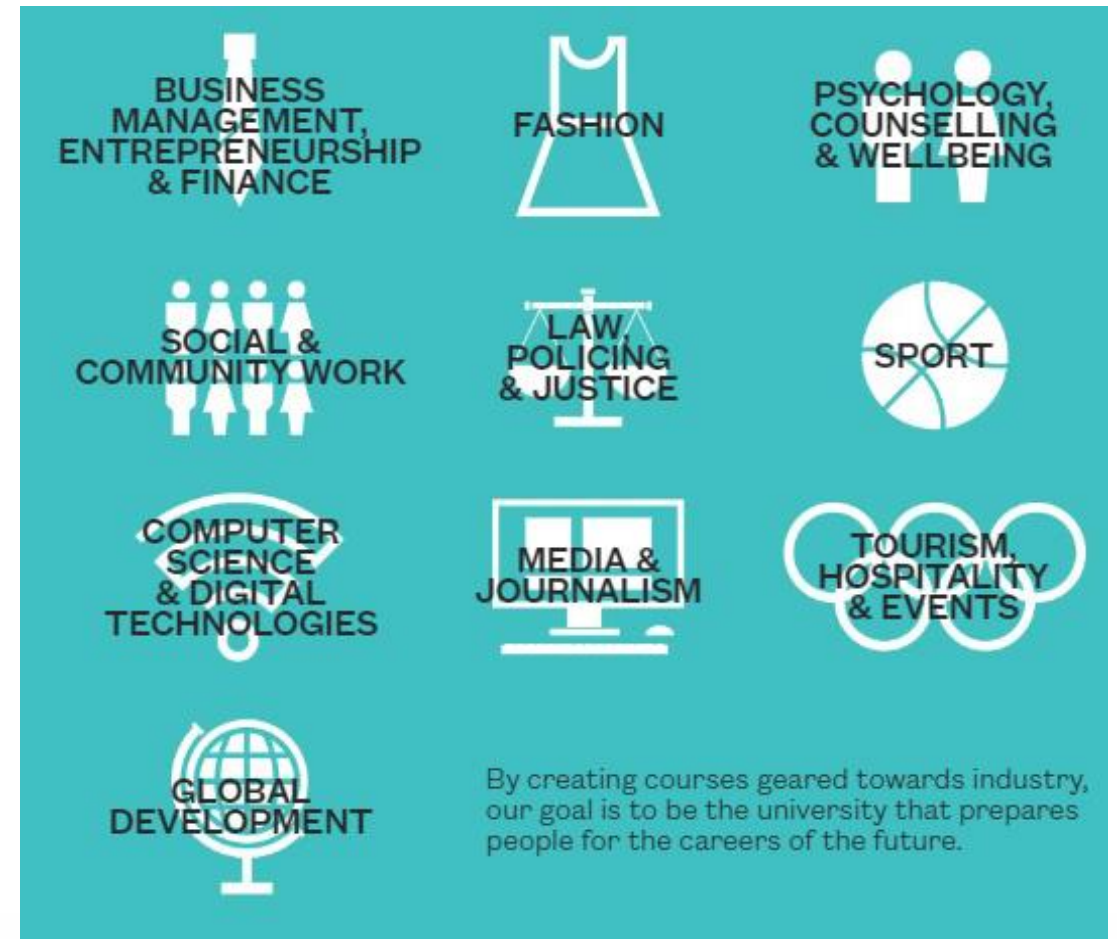
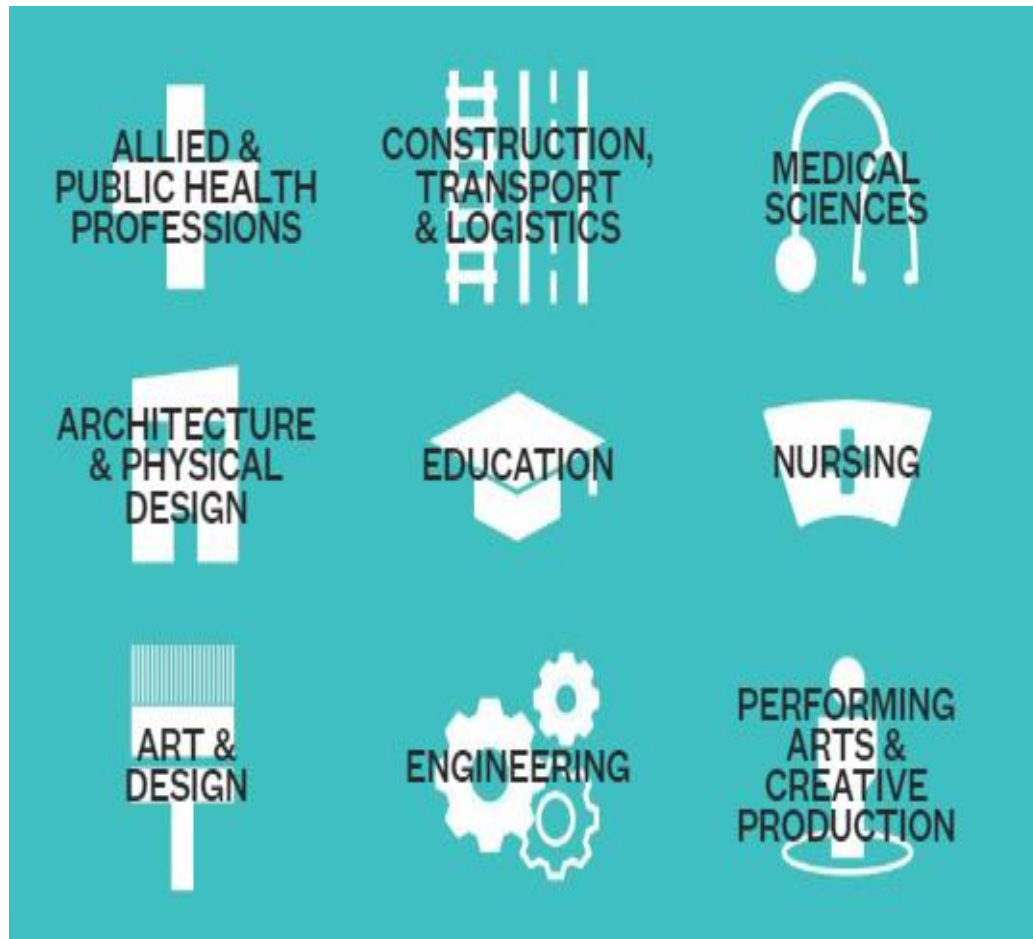
2015

Growing reputation.

Four The University of East London architecture lecturers nominated for the Turner Prize.



Our subject cluster areas



Equality, Diversity, and Inclusion

As one of the most diverse, vibrant, and socially inclusive universities in the UK we have a strong focus and long-standing commitment to inclusion and social mobility. At the University of East London, we celebrate diversity. Our aim is to create a future in which anyone with the will and potential to succeed, regardless of their background, race or religion can transform their lives by studying with us.

- Ranked first in the UK and second in the world in reducing inequalities, and second in the UK in gender equality (Times Higher Education Impact Rankings 2020).
- The University's Office for Institutional Equity (OIE) is the first of its kind in the UK and has specific responsibility for addressing inequalities within the institution.
- The focus on equality and diversity at the heart of Vision 2028 has resulted in an 8 per cent reduction in the degree awarding gap between good Honours degrees of full time BAME and White students.
- The Black Academy is a group of academic and senior professional staff committed to shaping policy and practice around educational equity, anti-racism, Black representation, and inclusivity in higher education.

Pioneering Futures Since 1898

Leading Sports University

University of East London is the top choice for some of the UK's most exciting young sporting legends, Olympians, and Paralympians. We bring together a dual career approach, extraordinary athletes with exceptional facilities, and innovative research expertise with extensive partnerships across major sporting organisations.



University of
East London

YOUR FUTURE CAREER



University of
East London

Industry 4.0 is transforming the world. **Do you have what it takes to keep up?**

You'll need to adapt, embrace change and prove to potential employers you're fit for the careers of the future.



We work with industry



Zaha Hadid Architects



Professional Fitness & Mental Wealth

Our Professional Fitness & Mental Wealth programme is completely unique.

It gives our graduates a set of abilities that impress potential employers and prepares them for the future world of work. The Career Passport provides proof of each skill you've mastered as part of this programme. Some of these skills are validated externally by major corporations, such as Microsoft and Amazon.

As a compulsory part of your study, Mental Wealth counts towards your final qualification. You'll graduate with a unique set of skills covering three key areas:

1. **Individual intelligence** – develop emotional, social, physical and cognitive intelligence to help you adapt.
2. **Digital proficiency** – learn to use ICT effectively so you can keep up with a world that is dominated by new technology.
3. **Cultural intelligence** – explore how to work effectively across cultures so you fit in wherever you work in the world.

Find out more at: uel.ac.uk/mental-wealth



Career passport

This is a digital repository that provides employers with evidence of the applied skills, competencies and experience that each graduate has developed from their participation in the Mental Wealth Programme over and above the degree-level knowledge base.

The Career Passport programme is a 'badging' system, still in development, which will provide students with the opportunity to access key skills validated by external companies and organisations.

The programme will also encourage students to undertake work placements.

The 'Developing Professional Fitness and Mental Wealth' modules and the Career Passport programme will sit alongside each other to aid students in developing key competencies which will help them in the workplace.

Your future career

“When people ask me where it all began, I’ll say at the University of East London. Everyone needs their break, and the University of East London have given me that. They’ve given me the boost to achieve bigger things. I can now call myself an entrepreneur. One of the benefits of being based at Knowledge Dock, the University of East London’s business incubation space, is that we’re surrounded by students.”

Alex Wilding

Founded VidiCREW at the Knowledge Dock thanks to e-Factor funding



University of
East London

Education can do more

At the University of East London, we go beyond a traditional education.

Our teaching focuses on the complete person, offering a personalised and flexible approach that takes account of your career-readiness, wellbeing and soft skills, as well as traditional academic tuition: Dual Delivery 2.0



University of
East London

Education can do more

Our Track my Future and Central Learning Labs offers:

- Personalised platforms to view your individual progress (linking holistic view of experience)
- Live streaming – digitally connected seminar rooms, labs, simulation suites and practical spaces
- Increased interaction and collaboration with your peers and academics
- Enhanced virtual learning for all of your learning materials
- Interactive learning activities and group work
- On-campus and remote timetabling pathways to enable you to access a vibrant university experience through the global health crisis and beyond

Prepare, plan, practice and interact: be challenged, discover and explore new concepts and ideas, and above all be supported to achieve the knowledge, confidence and career of your choice.

Be part of a new breed of learners, get involved and be part of the future.



**University of
East London**

THE FUTURE IS EAST LODNON



University of
East London

LONDON IS MOVING EAST



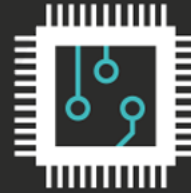
A NEW TECH COMPANY IS FORMED **EVERY HOUR** IN LONDON



THE OLYMPIC BOROUGHES POSSES THE YOUNGEST, **FASTEST-GROWING** AND **MOST MULTICULTURAL** NEIGHBOURHOODS IN THE UK



THERE WILL BE **125,000 NEW JOBS** IN EAST LONDON BY 2030



LONDON IS THE AI GROWTH CAPITAL OF EUROPE, WITH **£200M INVESTMENT** IN LONDON'S AI SECTOR IN 2017

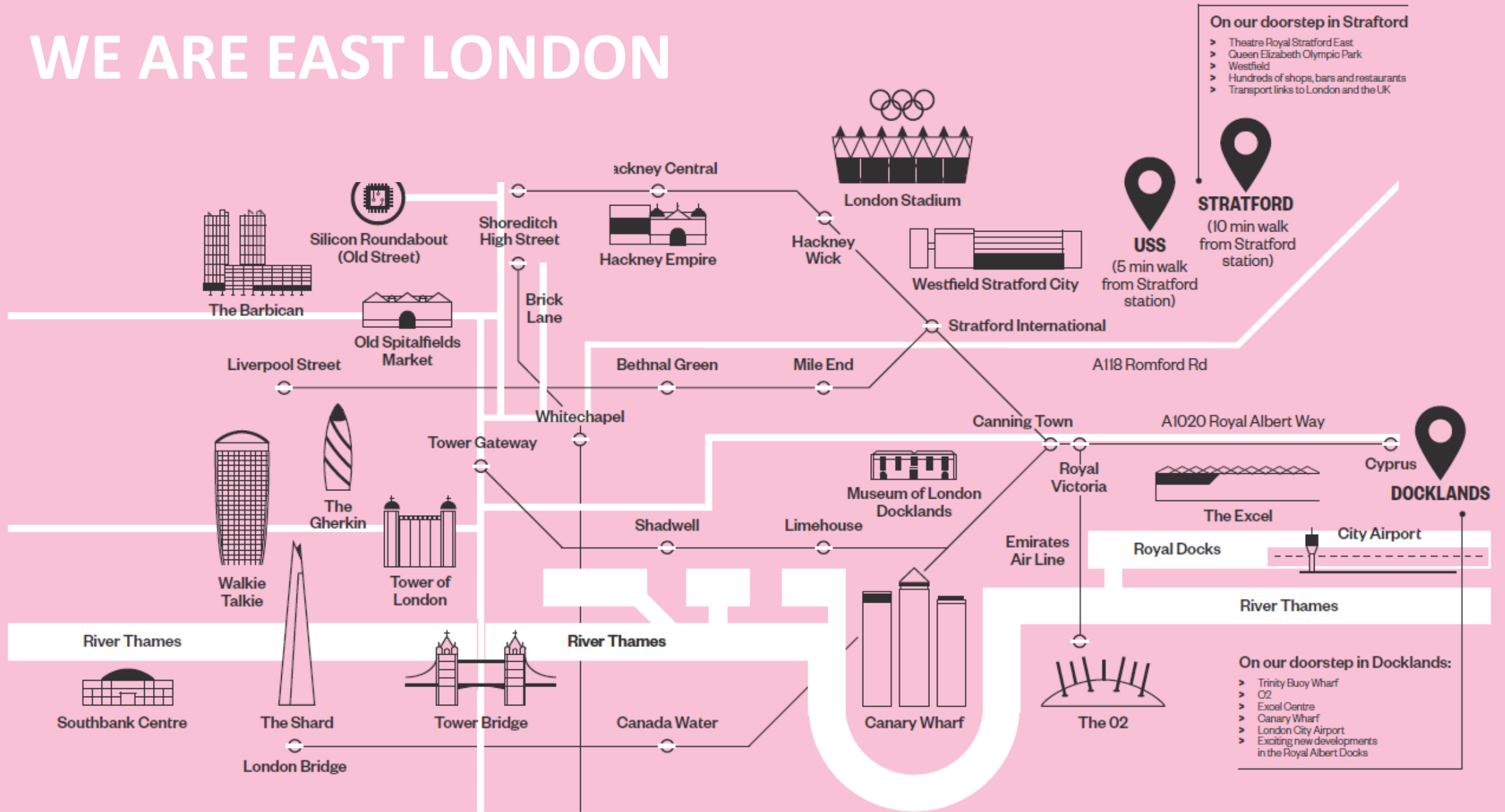


EAST LONDON'S BOROUGHES REPRESENT THE **MOST SIGNIFICANT GROWTH POINT** IN THE UK, WITH A PROJECTED INCREASE OF **£6-7BN** CONTRIBUTION TO THE ECONOMY.



10,885 NEW STARTUPS IN EAST LONDON A YEAR (BASED ON 2014)

WE ARE EAST LONDON





Teachers and Advisers Conference

Tuesday 25th May
10.00am – 12.30pm



Free wellbeing pack for first 50 Teachers/Career Advisers who register! [Click to find out more](#)



University of
East London

uel.ac.uk



University of
East London

Any questions?

Here to help



www.gatewayqualifications.org.uk



enquiries@gatewayqualifications.org.uk



01206 911 211

